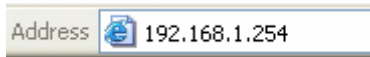
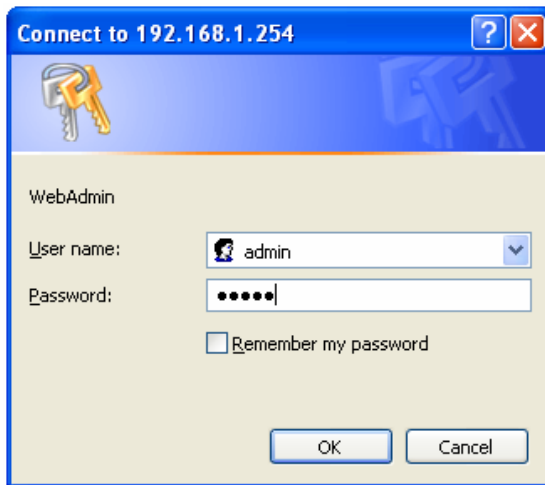


## Comcen Billion 7404VGP Setup Guide

1. Turn the device on.
2. Plug the Ethernet cable from the Billion Router into your PC or Laptop (windows should automatically set it up).
3. Open your Internet Browser (usually Internet Explorer).
4. In the address bar enter: 192.168.1.254 as shown. Press Enter or 'Go'.

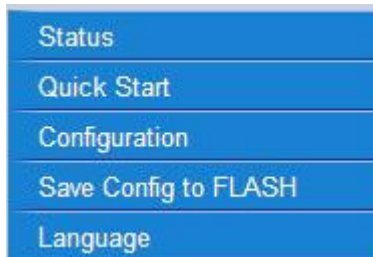


5. It will ask you for a Username and Password. *Username: admin Password: admin.* Press OK.



### Setting up your broadband

6. Once logged in, click on Quick Start on the left hand side.

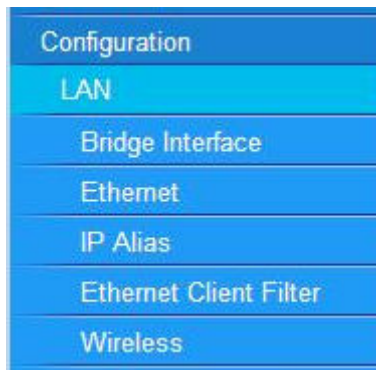


7. Enter in your broadband username and password as provided by your ISP and click on Apply.

Quick Start	
<b>Connection</b>	
Encapsulation	PPPoE <input type="button" value="Auto Scan"/>
VPI	8
VCI	35
NAT	<input checked="" type="radio"/> Enable <input type="radio"/> Disable
<b>Optional Settings</b>	
IP Address	0.0.0.0 (0.0.0.0 means 'Obtain an IP address automatically')
Subnet Mask	0.0.0.0
Default Gateway	
<b>DNS</b>	
Obtain DNS automatically	<input checked="" type="checkbox"/> Enable
Primary DNS	0.0.0.0
Secondary DNS	0.0.0.0
<b>PPP</b>	
Username	<broadband username>
Password	••••••••
<input type="button" value="Apply"/> <input type="button" value="Cancel"/>	

## Setting up your Wireless

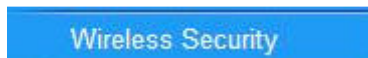
- Click on Configuration on the left hand side, click on LAN and then click on Wireless.



- Ensure the wireless details are entered as follows and click on Apply.

Wireless	
Parameters	
WLAN Service	<input checked="" type="radio"/> Enable <input type="radio"/> Disable
Mode	802.11b + g ▼
ESSID	wlan-ap
ESSID Broadcast	<input checked="" type="radio"/> Enable <input type="radio"/> Disable
Regulation Domain	N.America ▼
Channel ID	Channel 1 (2.412 GHz) ▼ <a href="#">Scan Channel Usage</a>
Tx PowerLevel	220 (0 ~ 255)
Connected	true
AP MAC address	00:1d:92:1c:19:33
AP Firmware Version	1.1.2.0
Wireless Distribution System (WDS)	
WDS Service	<input type="radio"/> Enable <input checked="" type="radio"/> Disable
1.Peer WDS MAC address	00:00:00:00:00:00
2.Peer WDS MAC address	00:00:00:00:00:00
3.Peer WDS MAC address	00:00:00:00:00:00
4.Peer WDS MAC address	00:00:00:00:00:00
** WDS depends on the settings of main security encryption type. **	
<input type="button" value="Apply"/> <input type="button" value="Cancel"/>	

10. To secure your wireless connection, click on Wireless Security on the left hand side.



11. Enter the details as follows and click on Apply.

Wireless Security	
Parameters	
Security Mode	WPA-PSK ▼
Pre-Shared Key	<enter a password>
Group Key Renewal	3600 seconds
Idle Timeout	3600 seconds (120~65535)
<input type="button" value="Apply"/> <input type="button" value="Cancel"/>	

**\*\* Note \*\*** You can enter any password you like in the 'Pre-Shared Key' section. Please ensure you write it down as if you forget it you will need to reset it inside your router (we cannot see this password).

12. You have now setup your Billion Router successfully.