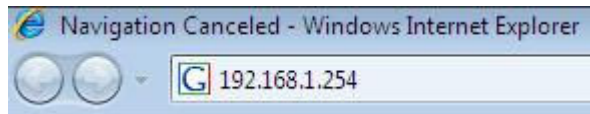


Step 1

Open your Internet browser (Mozilla Firefox, Internet Explorer etc.)



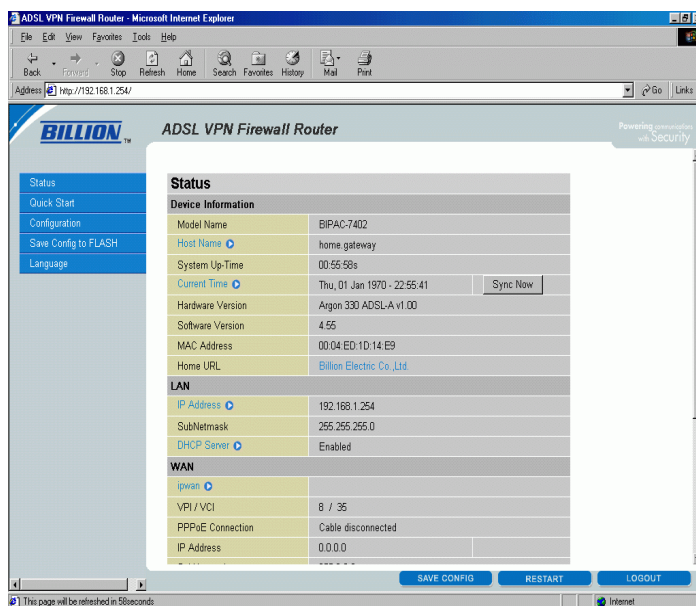
Step 2

To logon to your modem, it will prompt you to enter a user name and password. In the **User name:** field, enter **admin**. In the **Password:** field, enter **admin**. Once you have entered these details, click on the **Ok** button.



Step 3

You will now see a Billion page. Click on **Quick Start**.



Step 4

Enter the following settings:

Encapsulation: PPPoE LLC

VPI: 8

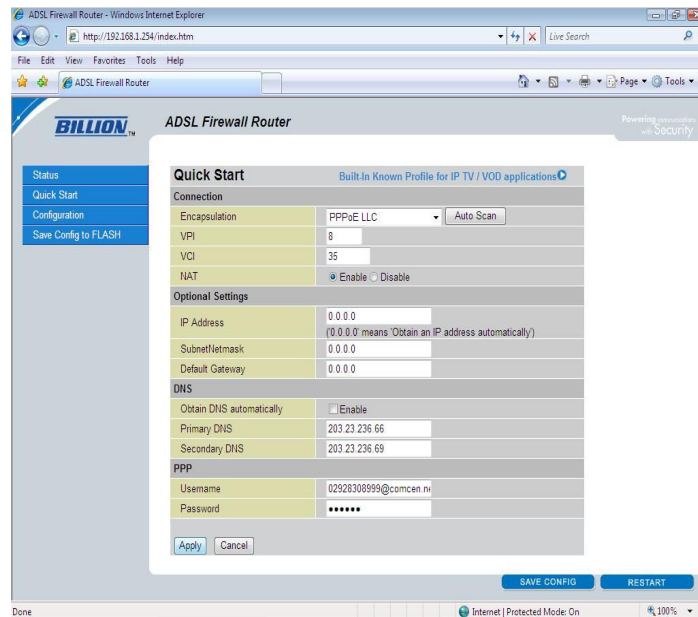
VCI: 35

Uncheck the box for **Obtain DNS automatically** and enter in the 2 fields:

Primary DNS: 203.23.236.66

Secondary DNS: 203.23.236.69

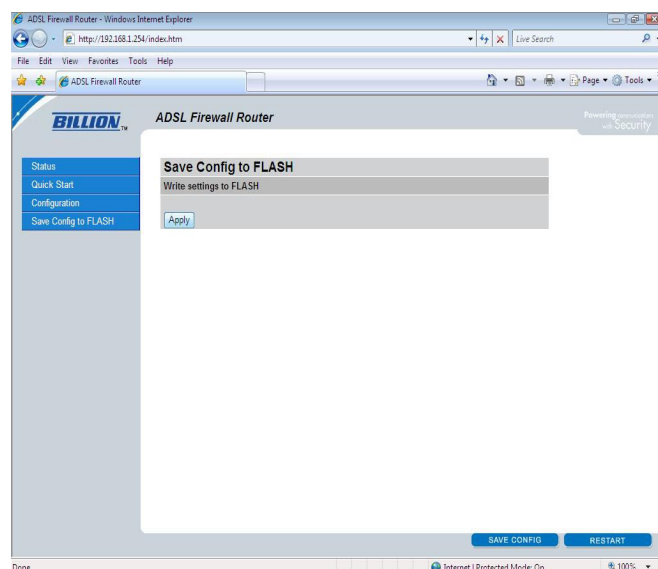
Now enter your broadband username and password (provided to you upon sign-up) into the fields provided.



Now click **Apply**.
Then click **Save Config**.

Step 5

Click **Apply**.



Close your browser.

Step 6

Your ADSL service should now be connected. Open your browser and start surfing the web.