

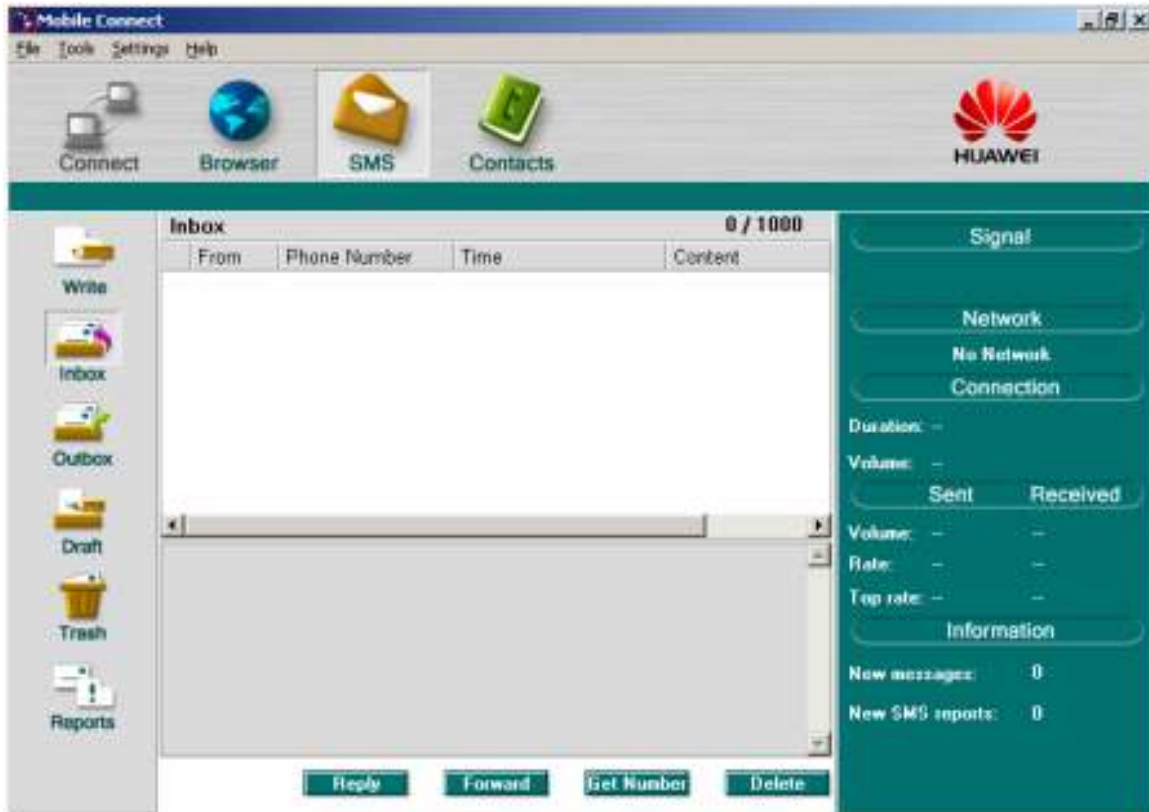
3G Wireless SMS Guide

Instructions on using SMS

Open the 3G Wireless Application.




Click on SMS Menu and maximize the screen or alternatively press ALT F5.



Status Information	Description
Connection	The current connection information: <ul style="list-style-type: none"> • Duration • Volume • Sent volume, received volume, rate, and the top rate
New messages	The number of new messages. If there is a new message, the number blinks.
New SMS reports	The number of new message reports. If there is a new message report, the number blinks.

Creating, Sending & Receiving SMS Messages

Click  or select Tools>SMS, the SMS interface is displayed

Step	Procedure
1	Click Write and the Write interface is displayed.
2	Enter the phone number by one of the following ways: <ul style="list-style-type: none"> • Enter the phone number: In the Contacts field, enter the phone number and use the semicolon to separate phone numbers. • Select the contact: Click Contacts. Select one or more contacts and click OK. In the pop-up dialog box, select the phone numbers and click OK. To select several contacts, select the Apply to all items check box to simplify the procedures.
3	Write the message. On the upper right corner of the interface, the number of remaining characters and the number of the message is split are displayed.
4	<ul style="list-style-type: none"> • Click Send to send the message. After the message is sent, it is auto saved to the Outbox. If the sending fails, a prompt is displayed asking whether to send it again. If you cancel the sending, the message is auto saved to the Outbox. • Click Save to save the message to the Draft. • Click Clear to clear the phone number and the message.

Note:

- To select several contacts, press and hold the Shift key or the Ctrl key.
- The 3G Wireless Application supports the group sending function. You can send message to a maximum of 20 phone numbers.
- Each message contains 160 English characters.

Inbox

On the SMS interface, click Inbox to access the Inbox

- Inbox stores received messages up to 1000 in total.

- If Inbox is full and there is a new message, the oldest message is automatically moved to the Trash.
- If there is an unread message, the number is displayed on the right panel of the home screen.
- To view messages double click on the message.

Replying to a message

You can reply to a message in the Inbox

Step	Procedure
1	Select or double-click the message to view details. Then click Reply .
2	The phone number of the sender is displayed in the Contacts field. You can edit the phone number.
3	Write the message.
4	Click Send .

Forwarding a message

You can forward a message

Step	Procedure
1	Select or double-click the message to view details. Then click Forward .
2	Enter the phone number of the recipient, or click Contacts to select the contact.
3	Details of the message are displayed in the text box. You can edit it.
4	Click Send .

Deleting a Message

You can delete a message

Step	Procedure
1	<ul style="list-style-type: none"> • Select one or more messages. • Double-click the message to view details.
2	Click Delete . The message is moved to the Trash.

SMS Settings

Option	Description
Reports	You can enable or disable this function. With the function enabled, if you send a message successfully, you can receive a delivery report.
Use same SMS centre for reply	Set the recipient to use the same SMS center number to reply the message.
SMS Bearer Domain	Set the bearer domain of sending a message. <ul style="list-style-type: none">• Circuit Switched (CS): messages are sent through the CS domain.• Packet Switched (PS): messages are sent through the PS domain.
Validity	Set the validity period for a message saved in the SMS center.
SMC Number	The SMS center number is supplied with the USIM/SIM card. After you insert the USIM/SIM card, the field is auto filled. If the field is null or you delete the number unconsciously, contact your service provider to retrieve the number.